


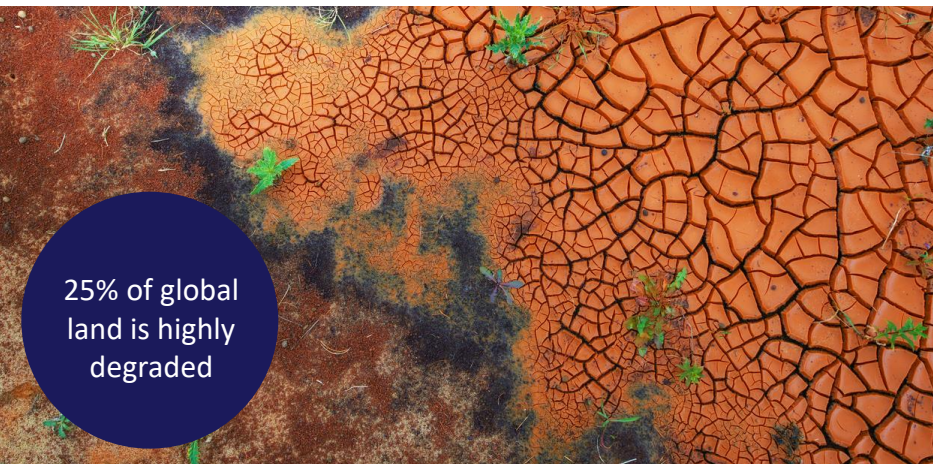


Agriculture is responsible for 25% of GHG emissions



815 million suffer from hunger - 2 bn are overweight

## Our global food system faces major challenges

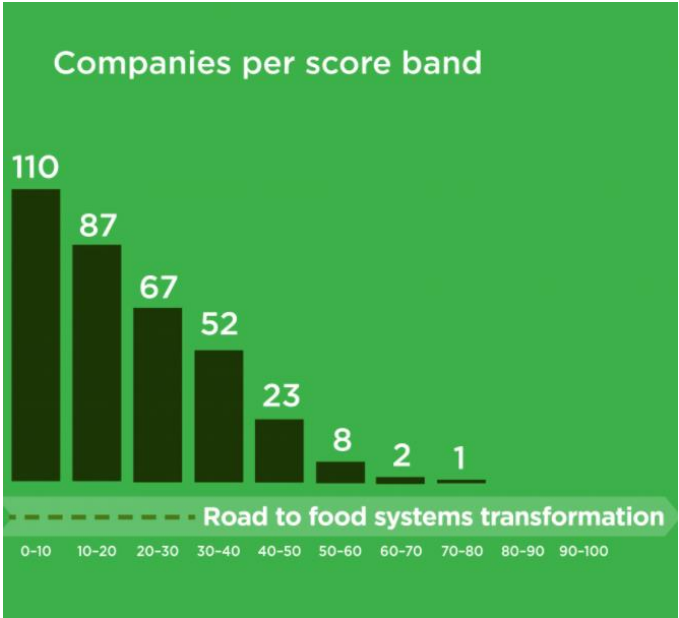
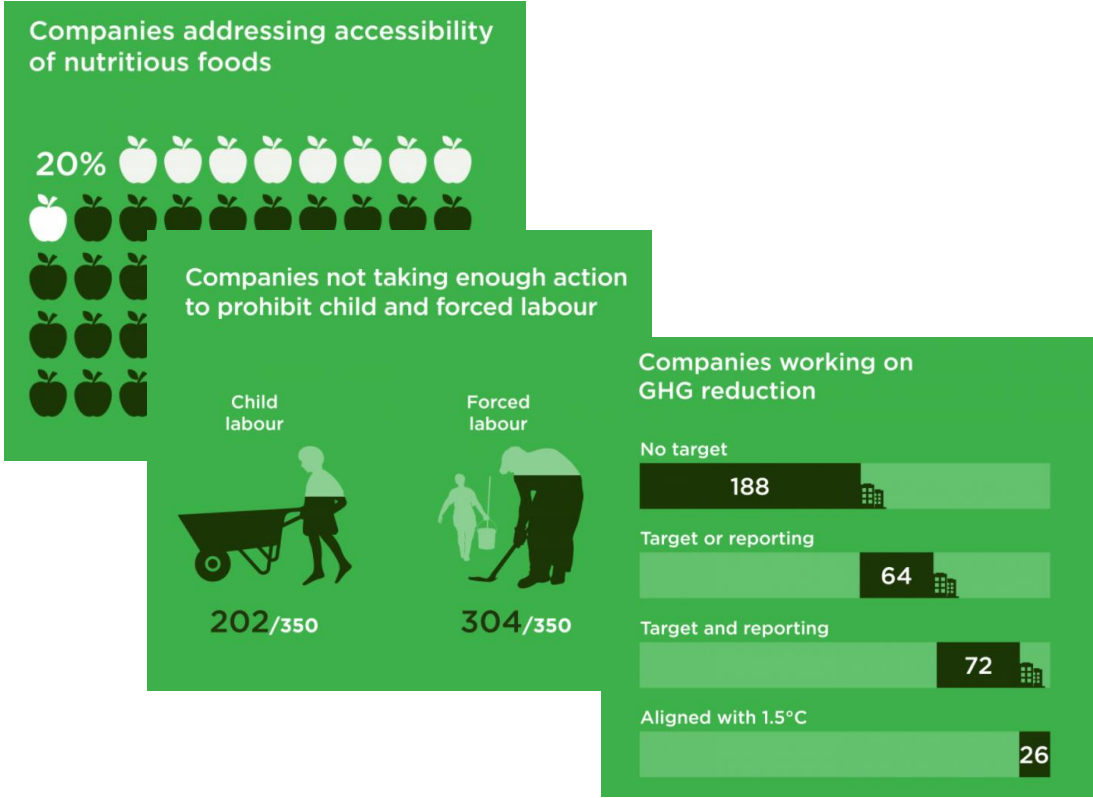


25% of global land is highly degraded



65% of world's poorest are farmers

# WBA's Food and Agriculture Benchmark first results 2021



## **WBCSD's 2050 VISION**

### **FOR FOOD AND AGRICULTURE**

**A REGENERATIVE AND EQUITABLE FOOD SYSTEM  
PRODUCING HEALTHY, SAFE, AND NUTRITIOUS  
FOOD FOR ALL**

Everyone has access to  
nutritious and affordable food

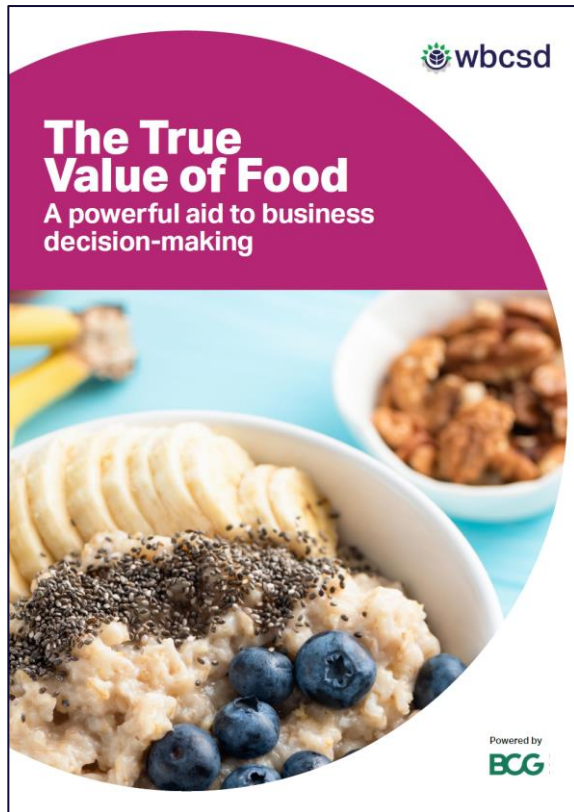
Sustainable production  
restores and safeguards  
nature

Food is consumed sustainably

Value chains are  
prosperous, equitable and  
free from human rights  
abuses





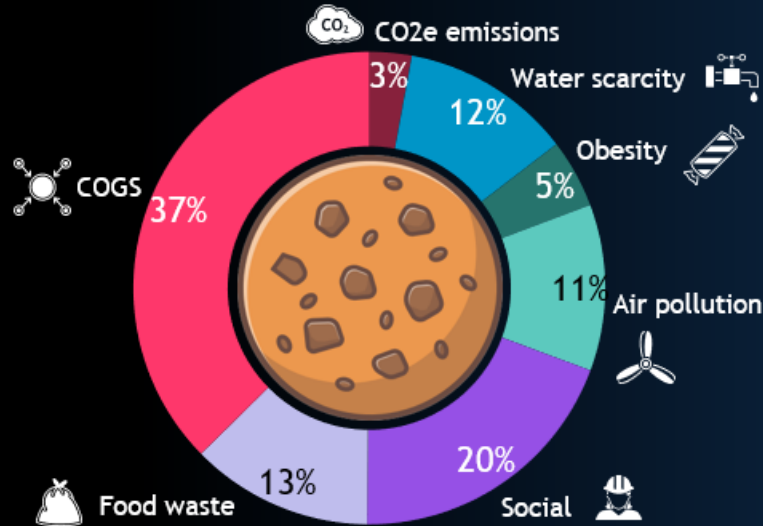


*“Securing the application of the true value of food in business decision-making and reporting represents a unique opportunity to create the awareness and incentives for the big transformation intended for food systems.”*

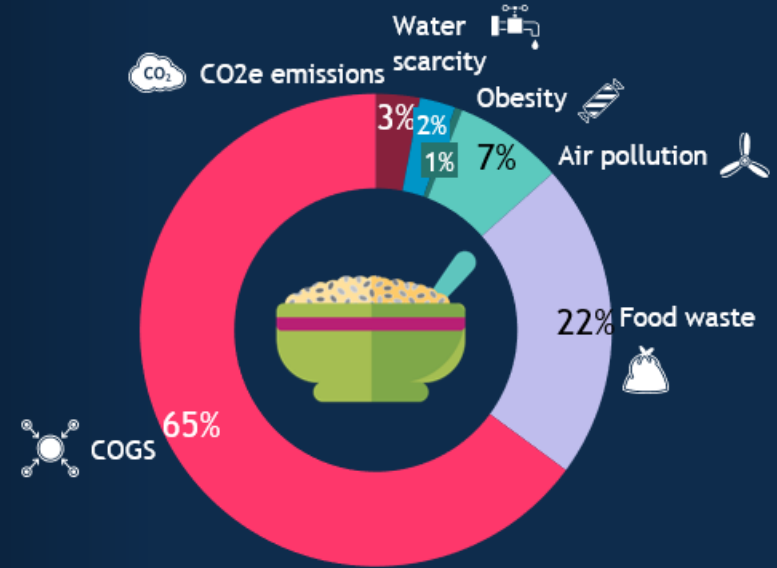
*Peter Bakker, CEO, WBCSD*

# A translation of TVoF to a chocolate-chip cookie & oat porridge illustrates the difference of impacts between two snacks

Chocolate-chip cookie<sup>1</sup> produced in Belgium and consumed in the UK has COGS of \$0.33, and additional hidden costs<sup>3</sup> estimated at \$0.56



Ingredients for oat porridge<sup>2</sup> bought and consumed in the UK have COGS of \$0.36, and additional hidden costs estimated at \$0.19





**Lead.**  
**Transform.**  
**Succeed.**